



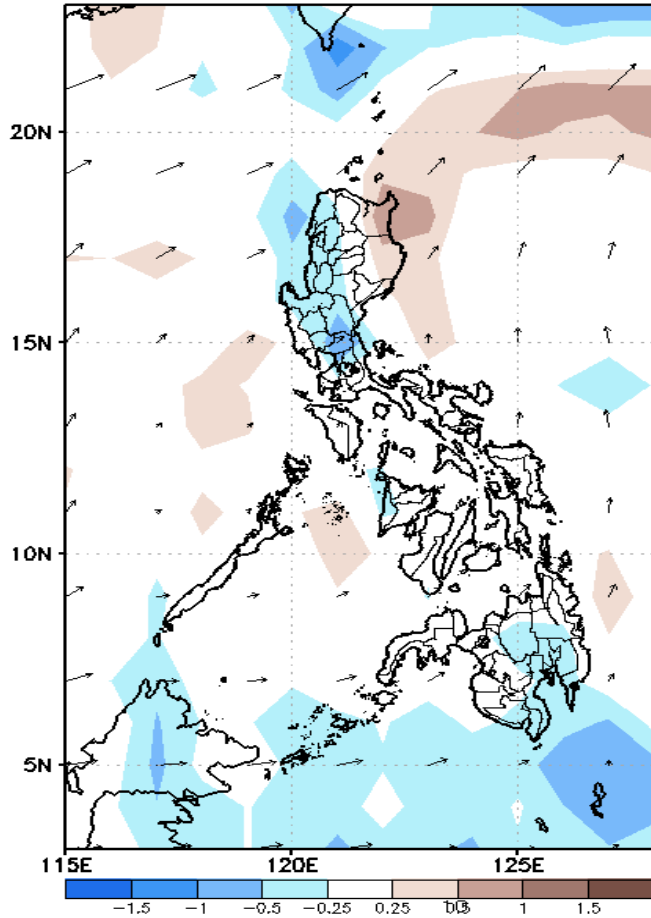
Week 1 & Week 2 Forecast for the Philippines using GEFS Model



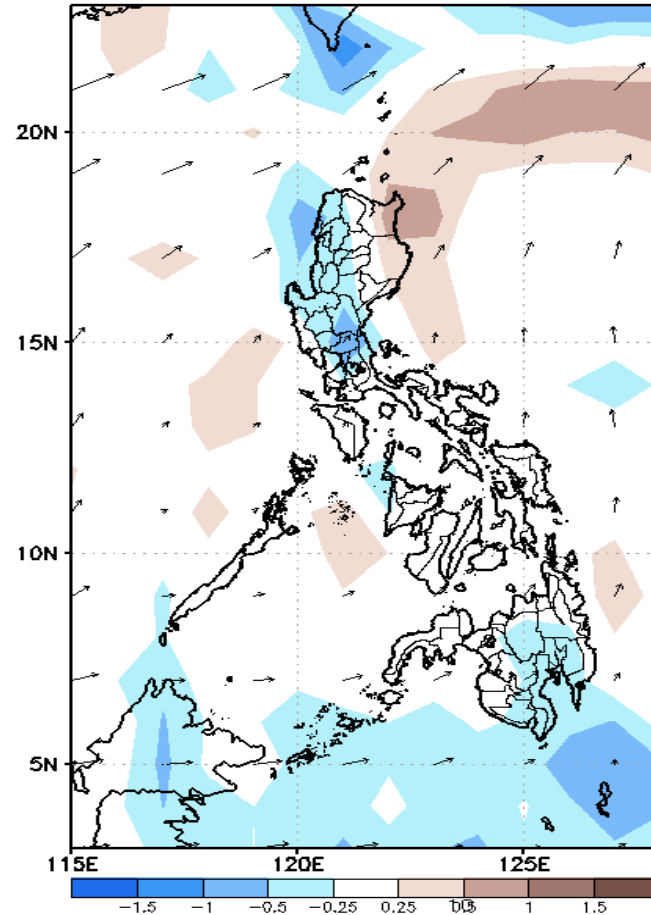
GEFS Week-1 Forecasts: Divergence & Wind Anomaly

Week 1: December 21-27, 2020

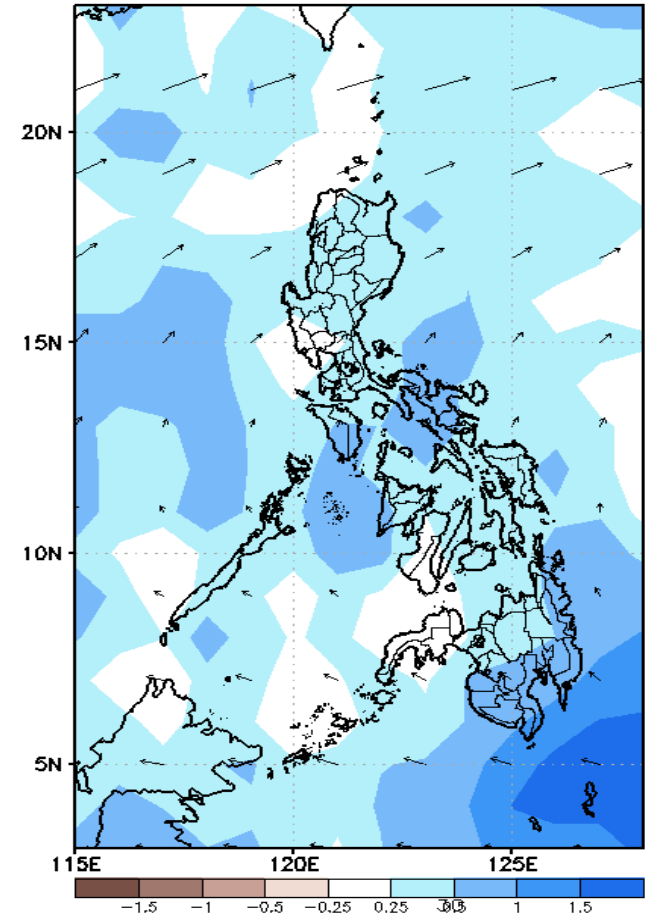
GEFS Week-1 850-hPa Divergence and Wind Anomaly
Valid: 20201221 - 20201227



GEFS Week-1 700-hPa Divergence and Wind Anomaly
Valid: 20201221 - 20201227



GEFS Week-1 200-hPa Divergence and Wind Anomaly
Valid: 20201221 - 20201227

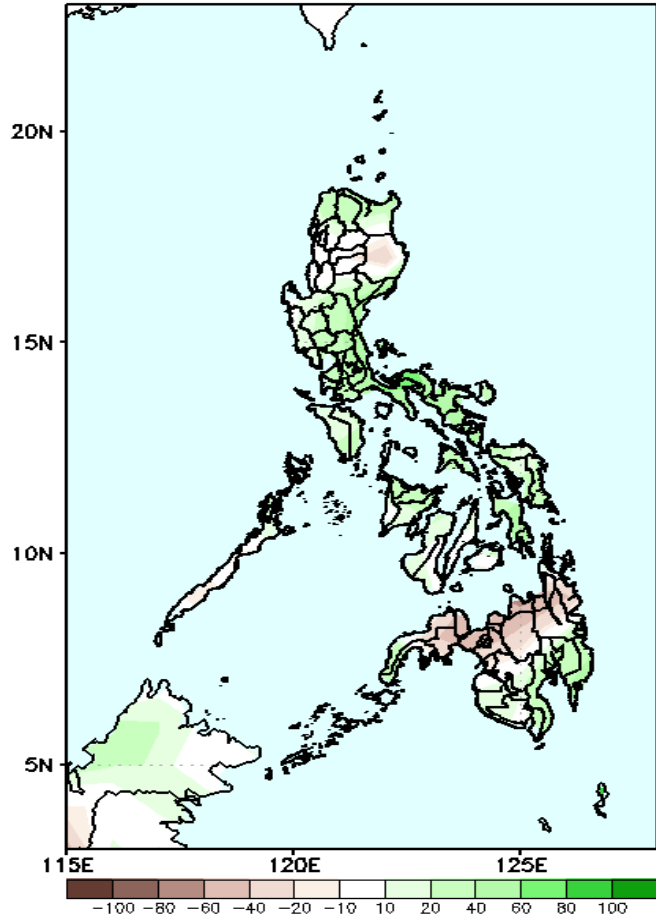


Upper and low level Divergence suggest likelihood of precipitation in most parts of the country. Northeast Monsoon affecting northern Luzon while easterlies affecting most parts of the country during the forecast period.

Precipitation Anomaly and Exceedance Probability > 25/50 mm

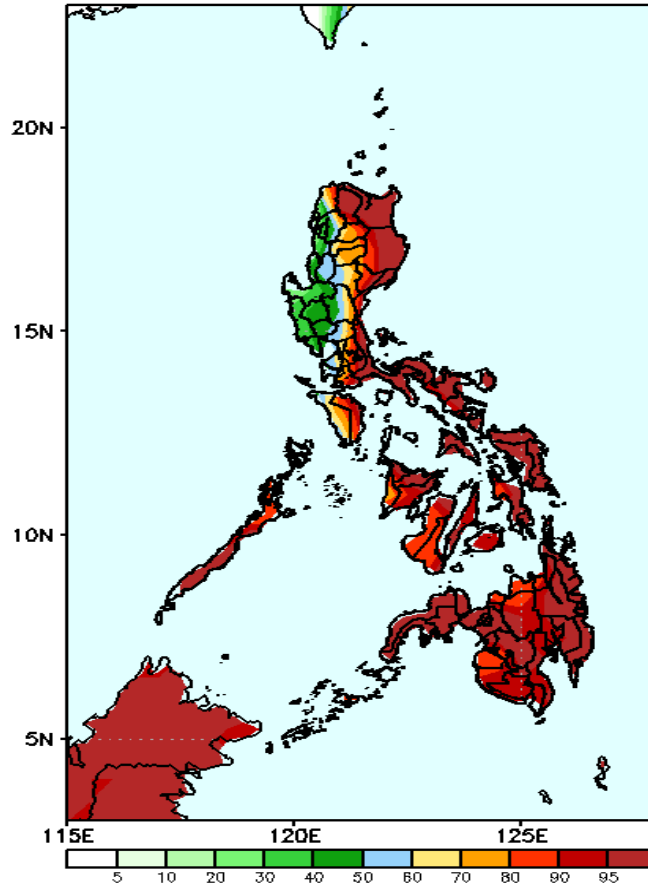
Week 1: December 21-27, 2020

GEFS Week-1 Precip Anomaly
Valid: 20201221 - 20201227



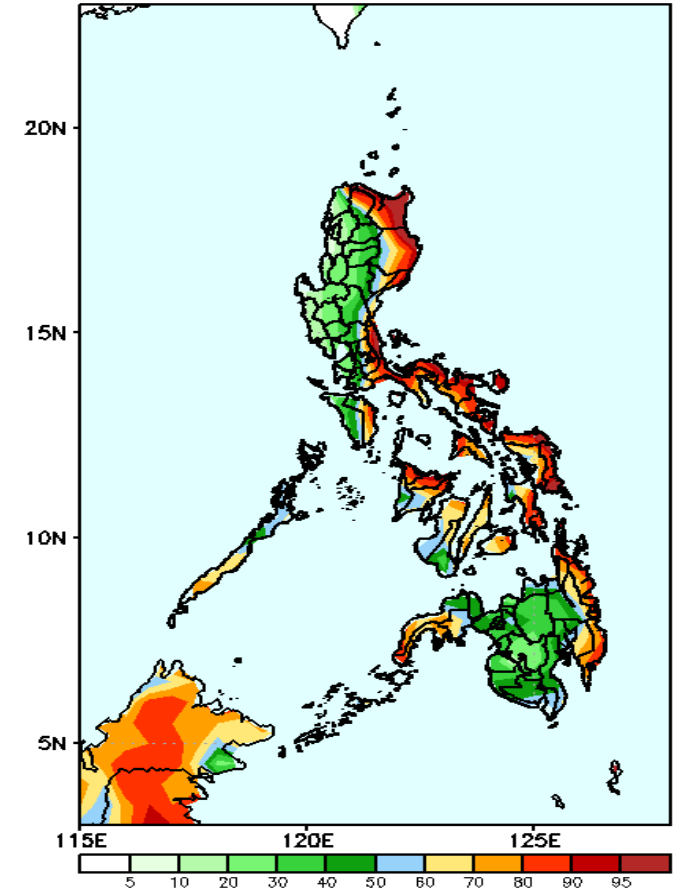
Increase of rainfall up to 100mm is expected in most parts of the country except in Isabela and northern half of Mindanao.

GEFS Week-1 Exceedance Prob. > 25mm
Valid: 20201221 - 20201227



High probability of rainfall to exceed 25mm in most parts of the country except Ilocos region, Benguet, Abra, Tarlac, Batangas, Zambales, Bataan, most parts of Central Luzon, NCR, Cavite and Batangas during the forecast period.

GEFS Week-1 Exceedance Prob. > 50mm
Valid: 20201221 - 20201227

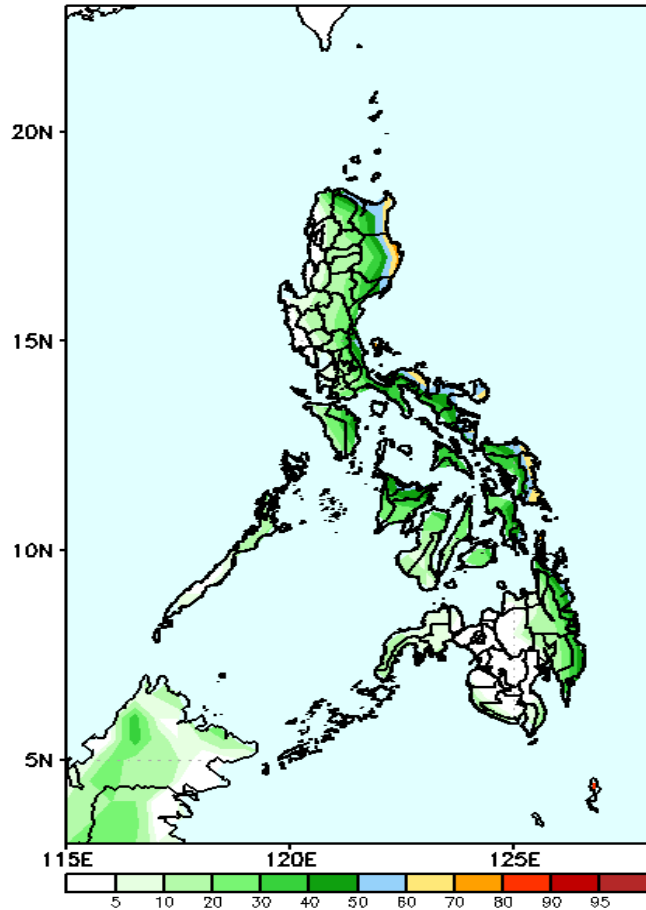


High probability of rainfall to exceed 50mm in Cagayan Valley region, Aurora, Quezon, Southern Luzon, Mindoro, Mindoro Oriental, parts of Palawan, Eastern Mindoro, most parts of Visayas and parts of Zamboanga peninsula while less likely for the rest of the country during the forecast period.

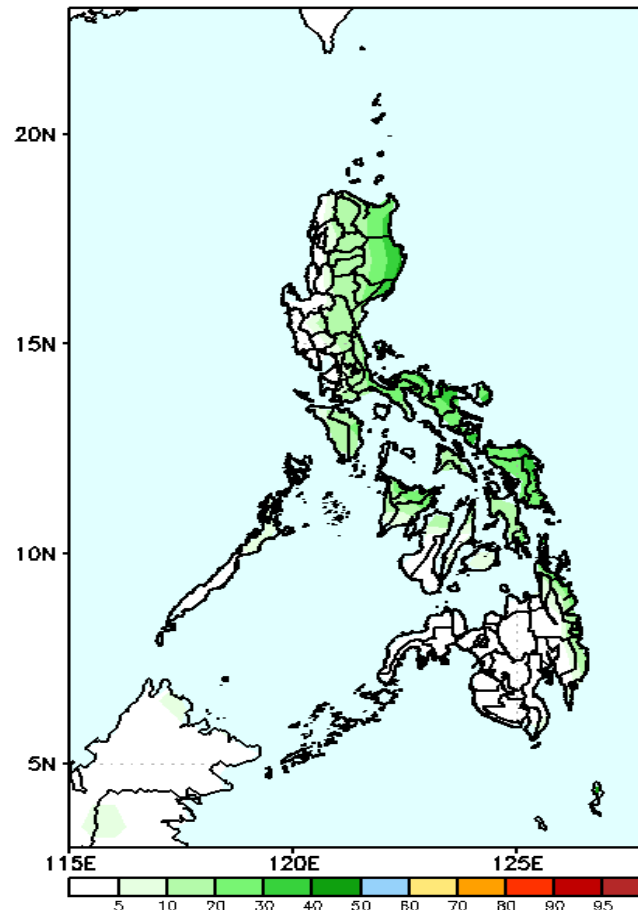
Exceedance Probability > 100/150/200 mm

Week 1: December 21-27, 2020

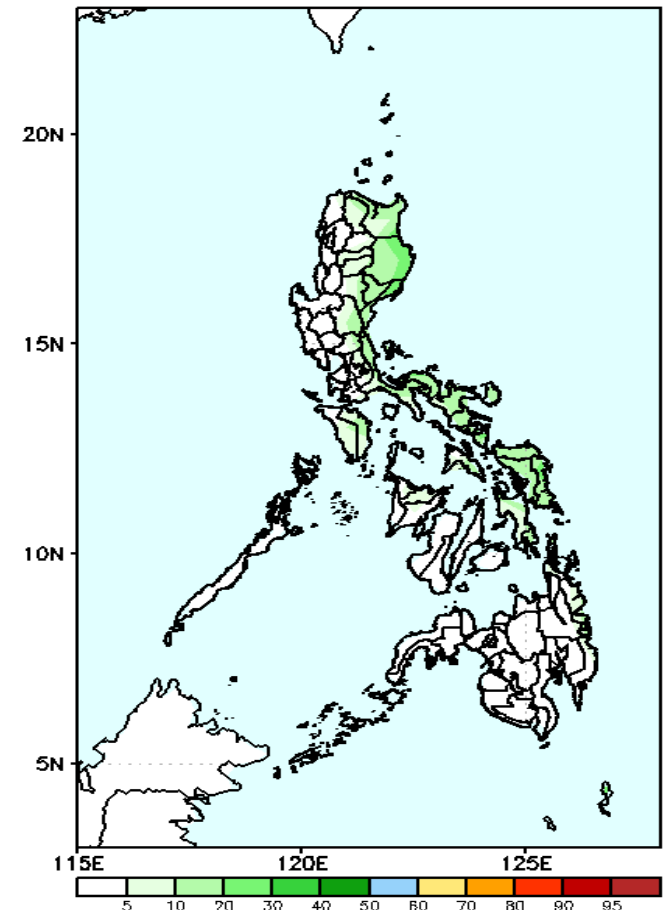
GEFS Week-1 Exceedance Prob. > 100mm
Valid: 20201221 - 20201227



GEFS Week-1 Exceedance Prob. > 150mm
Valid: 20201221 - 20201227



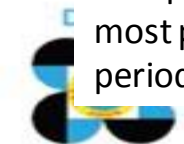
GEFS Week-1 Exceedance Prob. > 200mm
Valid: 20201221 - 20201227



Less probability of rainfall to exceed 100mm in most parts of the country during the forecast period.

Less probability of rainfall to exceed 150mm in most parts of the country during the forecast period.

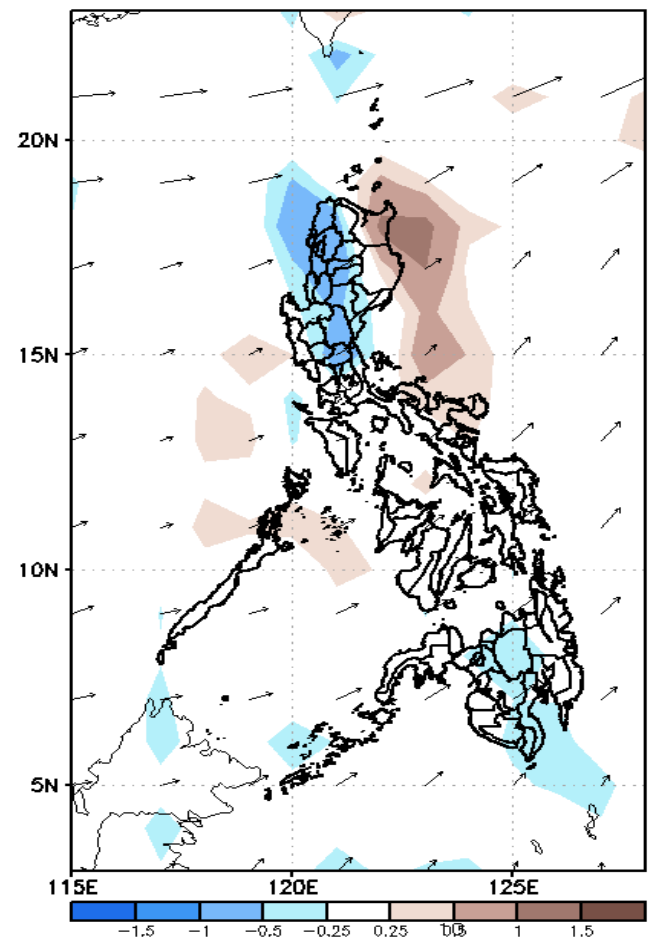
Less probability of rainfall to exceed 200mm in most parts of the country during the forecast period.



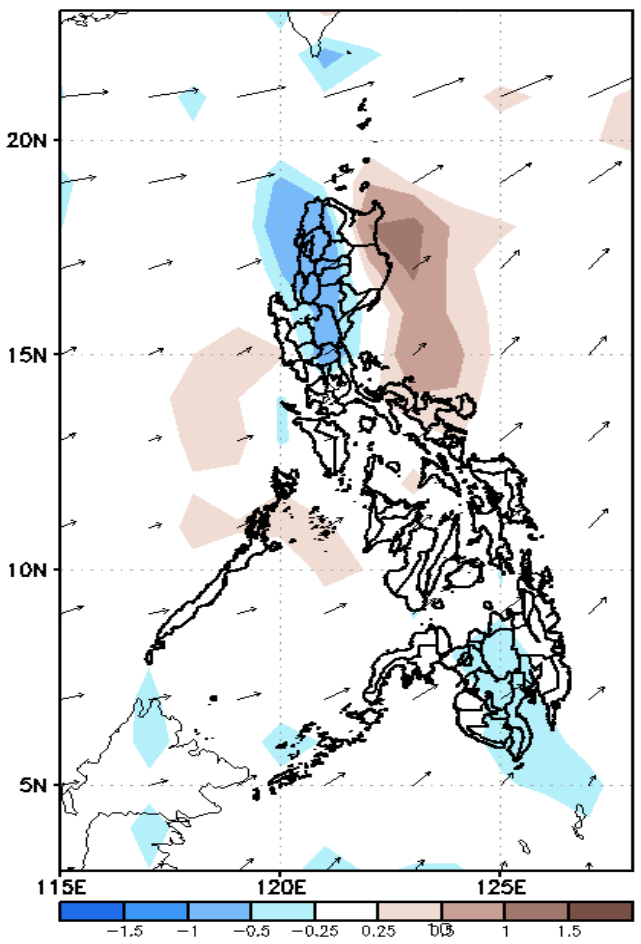
GEFS Week-2 Forecasts: Divergence & Wind Anomaly

Week 2: Dec 28, 2020-Jan 3, 2021

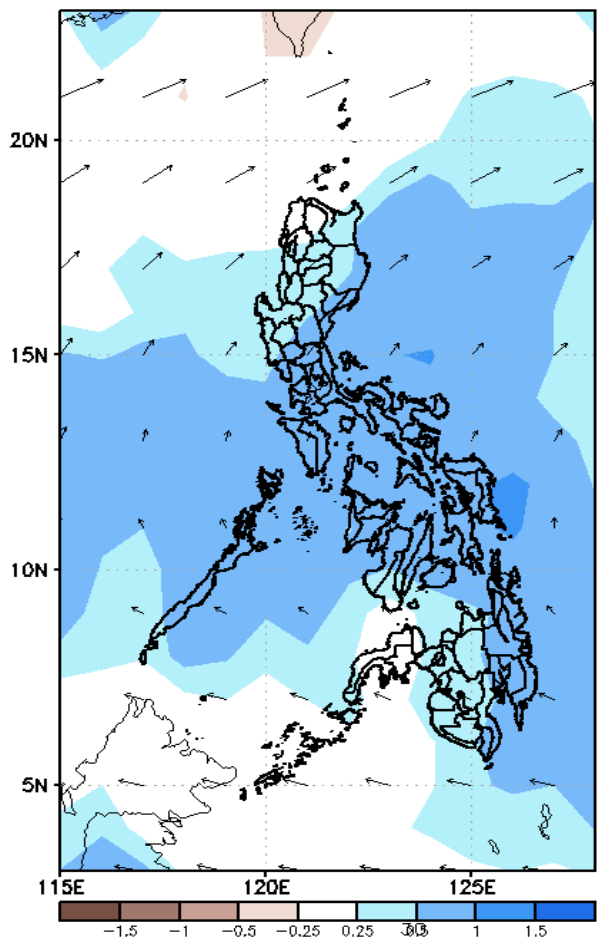
GEFS Week-2 850-hPa Divergence and Wind Anom
Valid: 20201228 - 20210103



GEFS Week-2 700-hPa Divergence and Wind Anom
Valid: 20201228 - 20210103



GEFS week-2 200-hPa Divergence and Wind Anom
Valid: 20201228 - 20210103



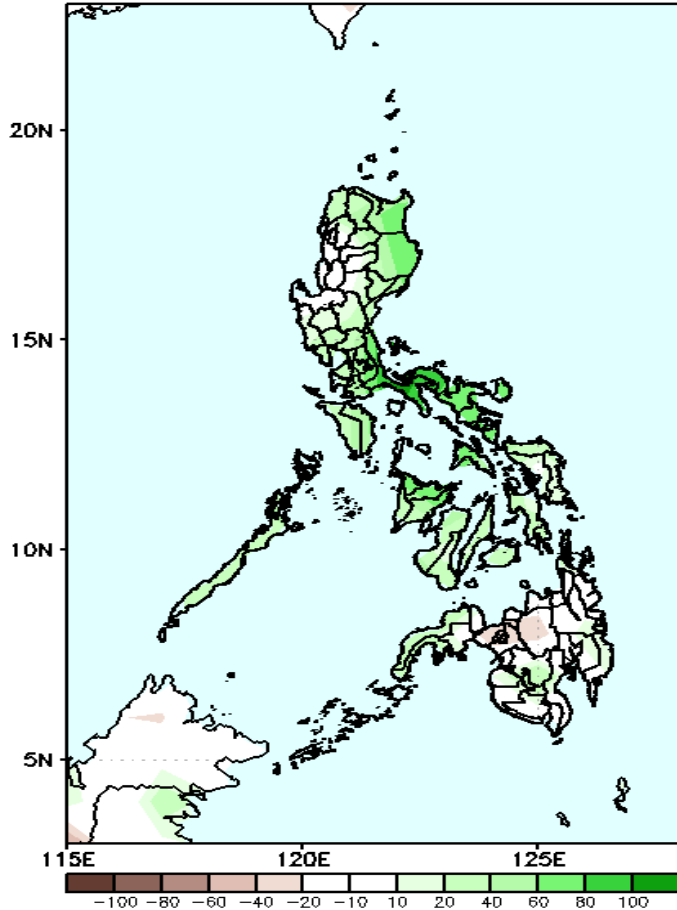
Upper and low level Divergence suggest likelihood of precipitation in most parts of the country. Northeast Monsoon affecting most parts of Luzon while easterlies affecting Visayas and Mindanao during the forecast period.



Precipitation Anomaly and Exceedance Probability > 25/50 mm

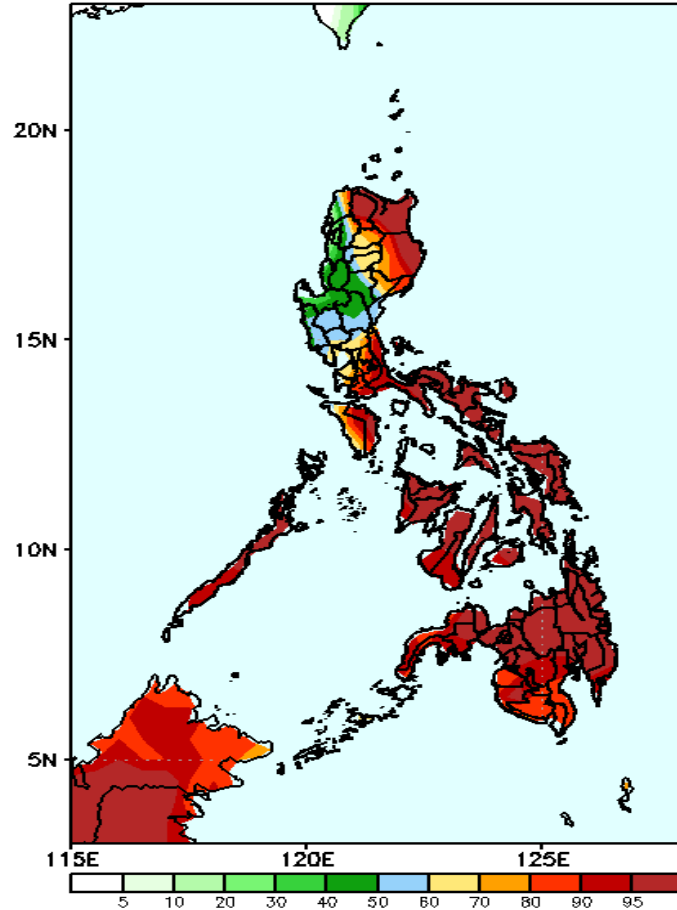
Week 2: Dec 28, 2020-Jan 3, 2021

GEFS Week-2 Precip Anomaly
Valid: 20201228 - 20210103



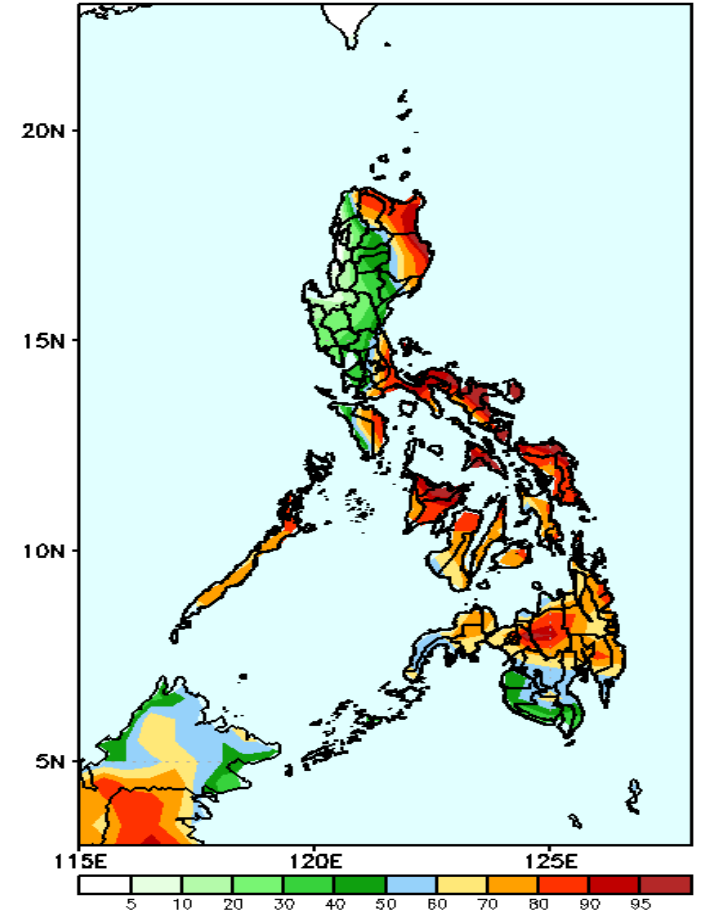
Increase of rainfall up to 100mm is expected in most parts of the country except in northern Mindanao.

GEFS Week-2 Exceedance Prob. > 25mm
Valid: 20201228 - 20210103



High probability of rainfall to exceed 25mm in most parts of the country except Ilocos region, Benguet, Abra and some parts of Central Luzon during the forecast period

GEFS Week-2 Exceedance Prob. > 50mm
Valid: 20201228 - 20210103

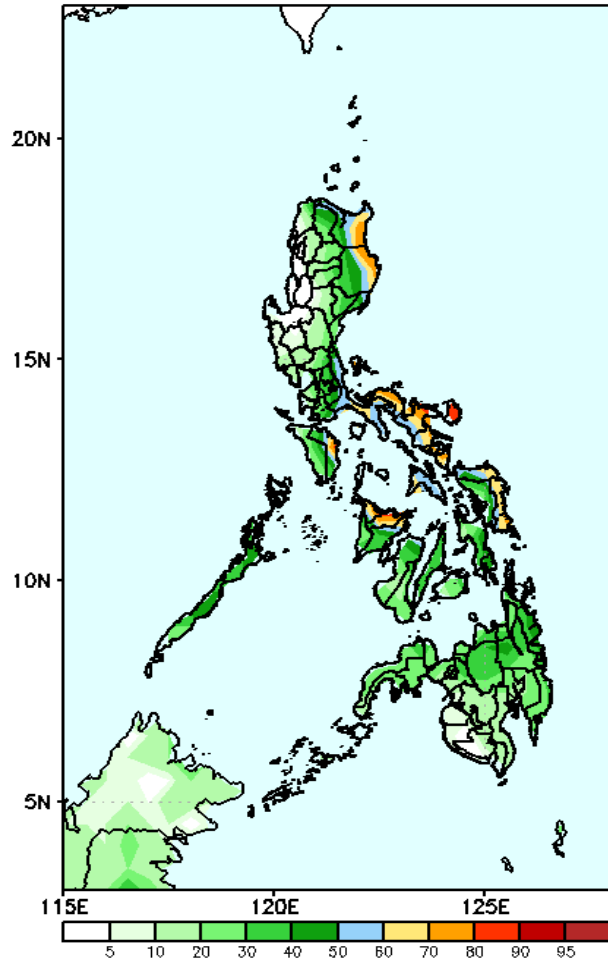


High probability of rainfall to exceed 50mm in Apayao, Cagayan, Isabela, Quezon, Southern Luzon, Mindoro Oriental, Palawan, most parts of Visayas and most parts of Mindanao (except SOCSARGEN) while less likely for the remaining parts of the country during the forecast period.

Exceedance Probability > 100/150/200 mm

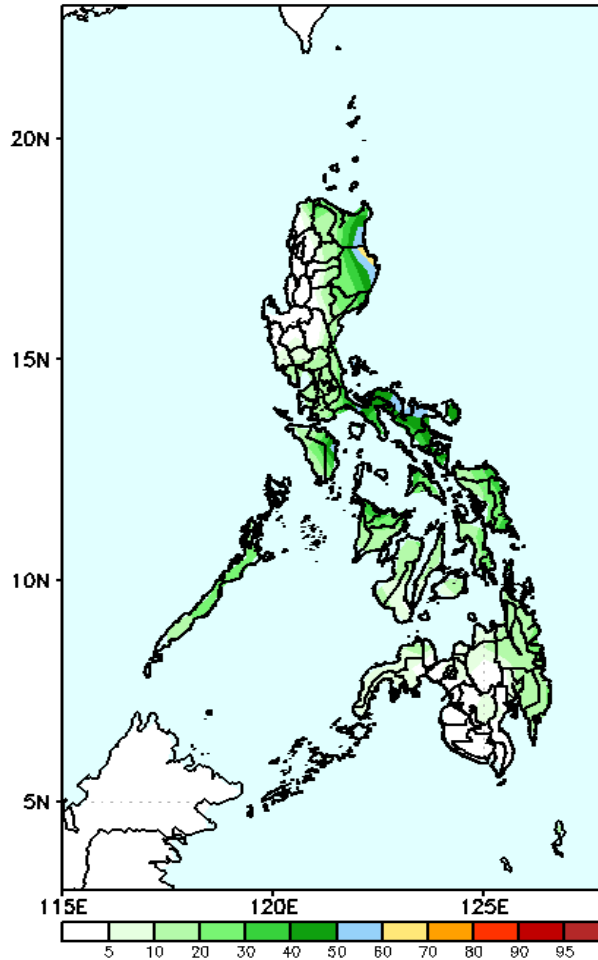
Week 2: Dec 28, 2020-Jan 3, 2021

GEFS Week-2 Exceedance Prob. > 100mm
Valid: 20201228 - 20210103



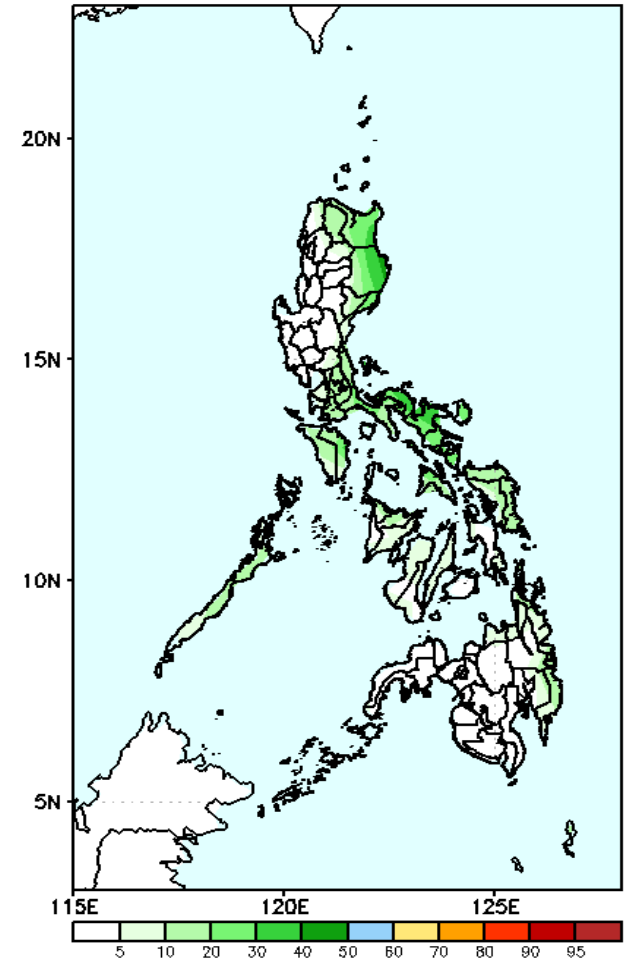
Less probability of rainfall to exceed 100mm in most parts of the country is expected during the forecast period.

GEFS Week-2 Exceedance Prob. > 150mm
Valid: 20201228 - 20210103



Less probability of rainfall to exceed 150mm in most parts of the country during the forecast period.

GEFS Week-2 Exceedance Prob. > 200mm
Valid: 20201228 - 20210103

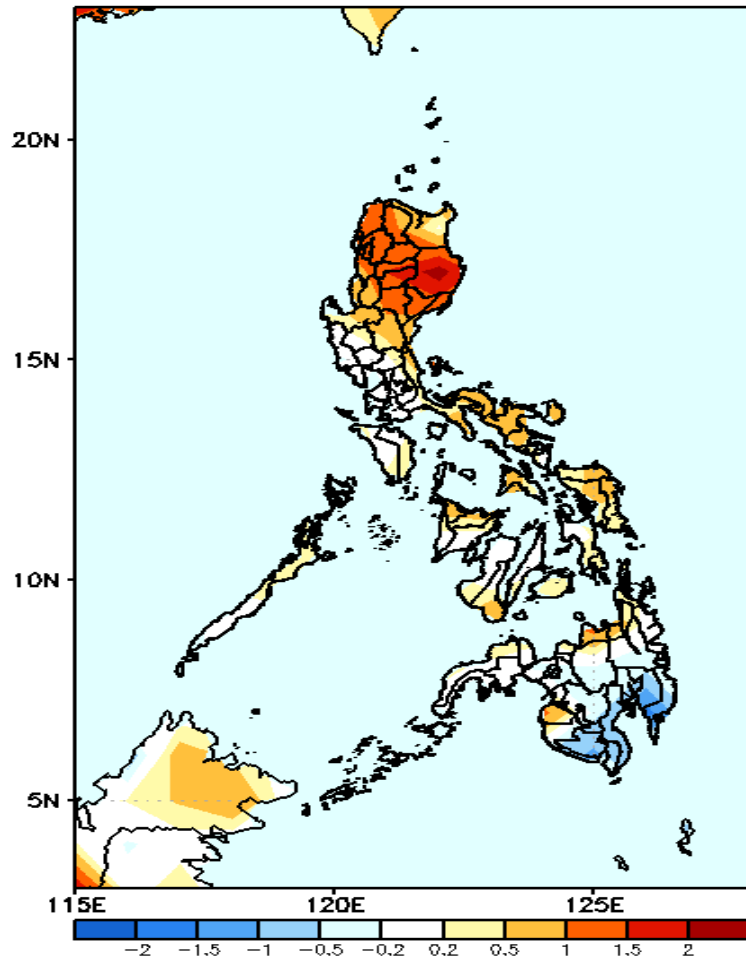


Less probability of rainfall to exceed 200mm in most parts of the country during the forecast period.



GEFS Week-1 & 2 Forecasts: T2m Anomaly

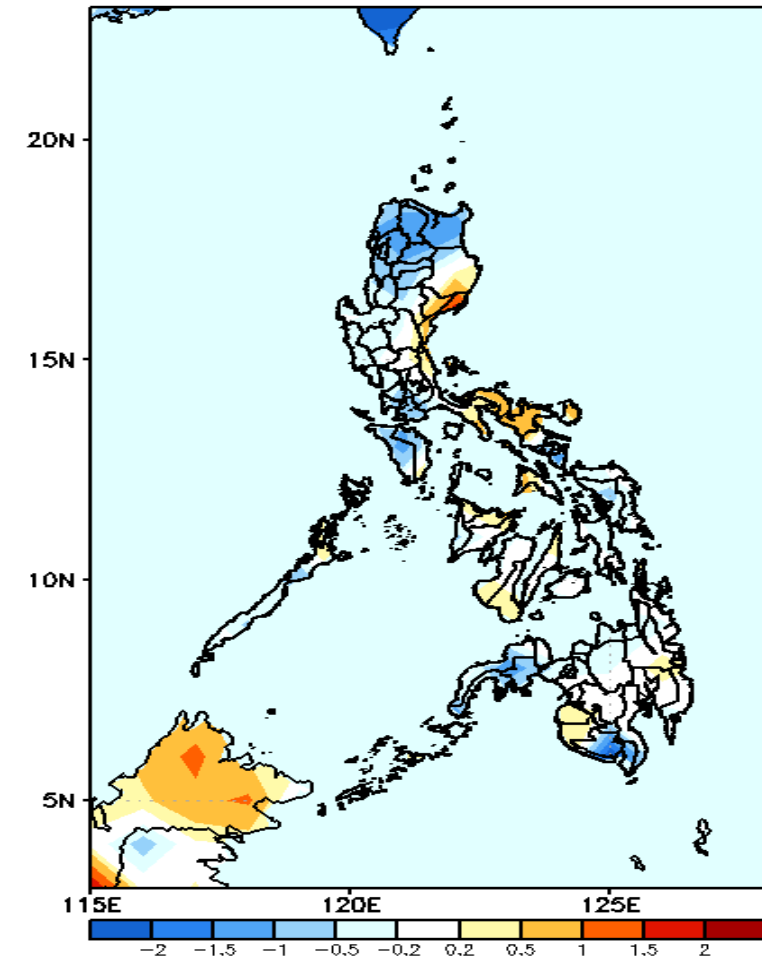
GEFS Week-1 T2m Anomaly
Valid: 20201221 - 20201227



2m Temperature Week 1: December 21-27, 2020

Slightly warmer to warmer than average surface air temperature is expected in most parts of the country is expected especially in Luzon.

GEFS Week-2 T2m Anomaly
Valid: 20201228 - 20210103



2m Temperature Week 2: Dec 28, 2020-Jan 3, 2021

Slightly cooler than average surface air temperature is expected in most parts of northern & southern Luzon, eastern Visayas, Zamboanga Peninsula and South Cotabato while the rest of the country will likely receive average to warmer than average temperature.